

Right Triangles

5.7 : Pythagorean Thm

□ Pythagorean Theorem:

$$a^2 + b^2 = c^2$$

□ Pythagorean Triples:

- 3, 4, 5
- 5, 12, 13
- 7, 24, 25
- 8, 15, 17

□ Classifying Triangles:

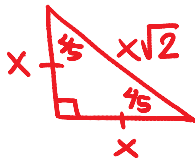
1st Δ Determine whether or not the 3 side lengths form a Δ
 * Sum of 2 smaller sides must be greater than 3rd side

2nd Type of Δ :

- $c^2 > a^2 + b^2$ obtuse Δ
- $c^2 = a^2 + b^2$ right Δ
- $c^2 < a^2 + b^2$ acute Δ

5.8 : Special Right Δ 's

□ 45-45-90
 x x $x\sqrt{2}$



□ 30-60-90
 x $x\sqrt{3}$ 2x

