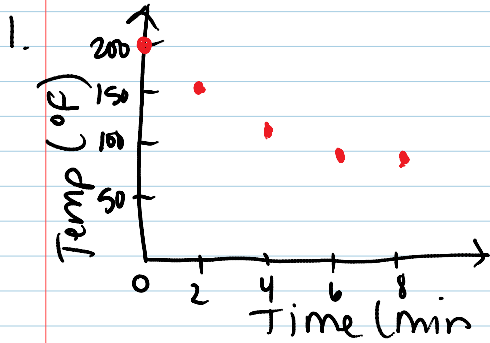


Friday, August 28, 2015
9:17 AM

2. The graph is slightly curved

3. The temp. would continue to drop, but it would level off at room temp.

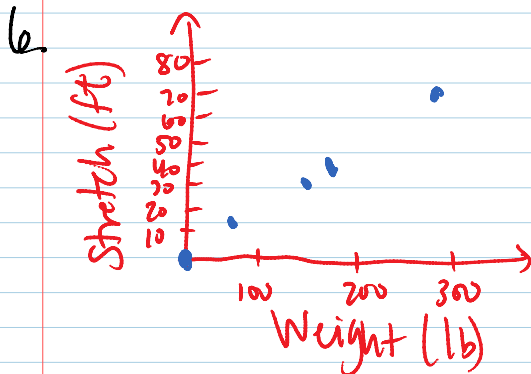
4. C is correct.

A → axis is not labeled correctly

B → not uniform

5. Length of stretch

0
16
36
44
70



7. The points all lie on a straight line through the origin.

8. The bungee cord would continue to stretch by about 1 foot for each 4 lbs. of additional weight, until it

might break 😊.